

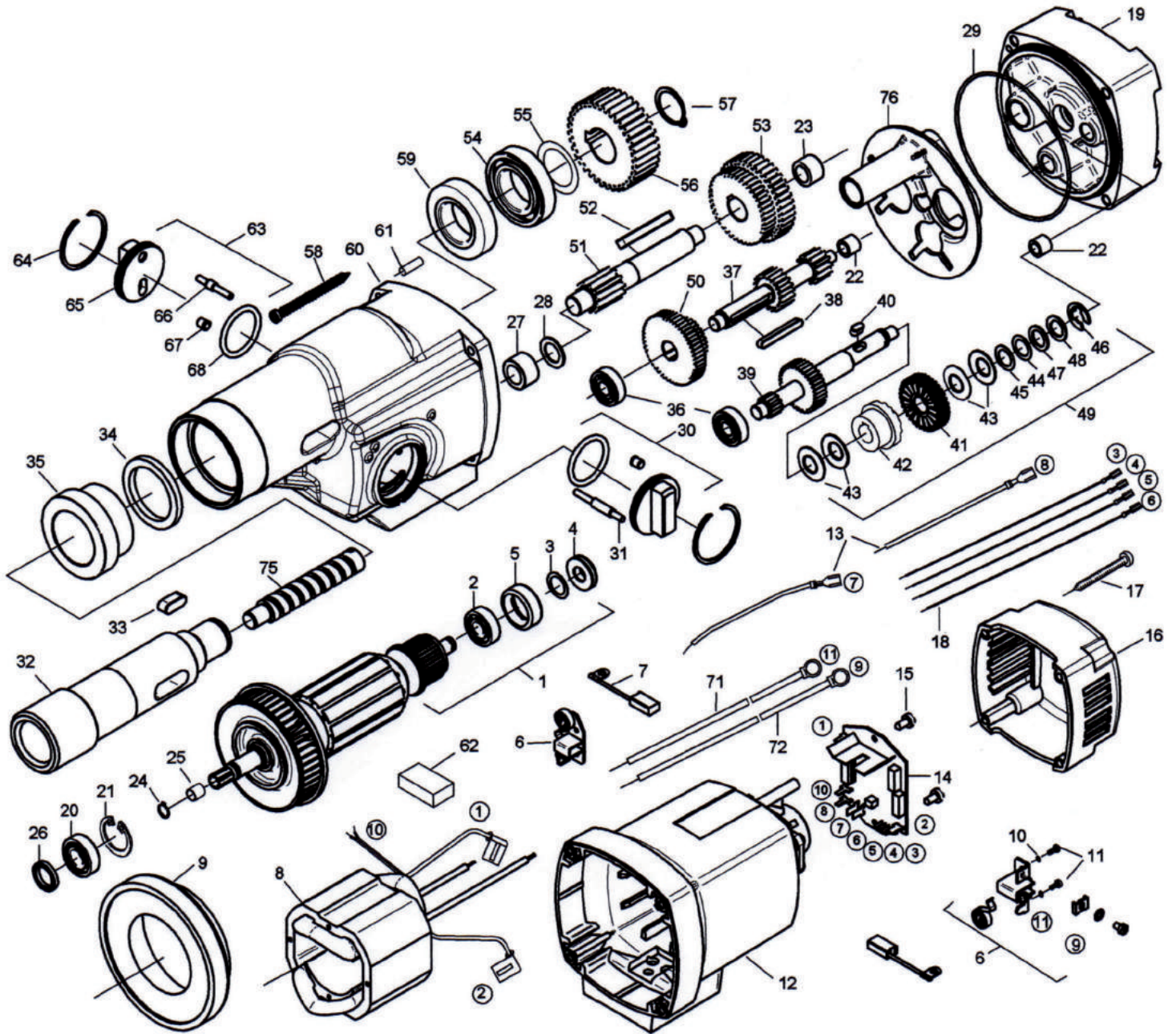
SPARE PARTS LIST MOTOR FOR KARNASCH
MAGNETIC HOLE CUTTING MACHINES

ART.: 20 8032 010 TYPE KATV140 - 230 VOLT /
ART.: 20 8032 020 TYPE KATV140 - 110 VOLT



ART.: 20 8032 010 TYPE KATV140 - 230 VOLT /

ART.: 20 8032 020 TYPE KATV140 - 110 VOLT



Subject to change

ART.: 20 8032 010 TYPE KATV140 - 230 VOLT /

ART.: 20 8032 020 TYPE KATV140 - 110 VOLT

MHB 40/4 R R/L - 230 V

no	description	part no	pcs
1	rotor complete	74643100	1
2	grooved ball bearing 6000 2Z	80410021	1
3	seal ring 10x14x1	83000507	1
4	magnetic disc	7633J325	1
5	bearing cap	83000031	1
6	brush holder	80201199	2
7	pair of brushes 6,3x16x20	80800160	2
8	stator complete	74564150	1
9	air guiding ring	73511141	1
10	lock washer B4	80201385	4
11	self tapping screw ZM4x12	80201180	4
12	motor housing black	7455K201	1
13	interconnecting wire	80600483	2
14	PCB / circuit board	80800330	1
15	self tapping screw HC 4,2x9,5	80201269	2
16	cap	80900082	1
17	self tapping screw HC 4,8x45	80201267	4
18	control wire	80600486	4
19	end shield of gearing	74645610	1
20	grooved ball bearing 6201 LuZ	80410101	1
21	locking ring 32x1,2	80201351	1
22	needle sleeve HK 0810	80420110	2
23	needle sleeve HK 1212	80420130	1
24	locking ring 12/1	80201321	1
25	bearing ring	80420160	1
26	shaft seal ring KEIV 15x21x3	83000042	1
27	needle bearing RNA 4900	80420001	1
28	disc needle bearing	71540517	1
29	o ring 106x2	83000092	1
30	switch button long	71641545	1
31	switch-actuating wheel long	71641542	1
32	work spindle	74641420	1
33	fitting key B6x6x20	80200606	1
34	felt ring	83000506	1
35	axial needle bearing NAXK 40	80420040	1
36	grooved ball bearing 6000	80410020	2
37	intermediate shaft 2	74641500	1
38	fitting key 5x5x40	80200612	1
39	intermediate shaft 1	74641490	1
40	fitting key 5x5x10	80200600	1
41	clutch wheel	74326550	1
42	coupling half	71540560	1
43	spring washer 28x12,1x1	80200713	4
44	fitting washer 12x0,2	80200502	1

no	description	part no	pcs
45	pressure washer 1	71540607	1
46	lock washer 9	80201361	1
47	fitting washer 12x0,5	80200503	1
48	pressure washer 2	71540606	1
49	clutch complete	74643493	1
50	gear block 1	74641440	1
51	intermediate shaft 3	74641510	1
52	fitting key 6x6x50	80200610	1
53	gear block 2	74641450	1
54	grooved ball bearing 6006 2 RS	80410071	1
55	fitting washer 25x0,1	80200512	1
56	spindle wheel	74641430	1
57	locking ring 25/1,2	80201327	1
58	self tapping screw HC 5,5x80	80201227	4
59	shaft seal ring 38x48x6	83000208	1
60	gearbox housing	74645400	1
61	notched pin plug 5x16	80200580	1
62	contact washer	80600306	1
63	switch button short	71641535	1
64	circlip SB42	80201355	2
65	switch button	71641540	2
66	switch-actuating wheel short	71641532	1
67	spring loaded thrust pad	85000157	2
68	o ring 36x1,5	83000022	2
69	brush holder wire	80600484	1
70	brush holder wire	80600485	1
73	spindle	74641425	1
76	gearbox compartment	74641625	1

MHB 40/4 R R/L - 110 V

no	description	part no	pcs
1	rotor complete	74644100	1
7	pair of brushes 6,3x16x20	80800490	2
8	stator complete	74563150	1
14	PCB /circuit board	80800420	1



RoHS Certificate of Compliance

This document certifies that the part numbers listed in this document and manufactured by **Karnasch Professional Tools** do not to the knowledge of the certifier contain the substances listed in the table below in concentrations exceeding the Maximum Control Value (MCV), and will be compliant as of the date listed.

Substance	Maximum Control Value
Lead	0,1 % by weight (1000 ppm) (1)
Mercury	0,1 % by weight (1000 ppm)
Cadmium	0,01 % by weight (100 ppm) (1)
Hexavalent Chromium	0,1 % by weight (1000 ppm)
Polybrominated Biphenyls (PBB)	0,1 % by weight (1000 ppm)
Polybrominated Diphenyl Ethers (PBDE)	0,1 % by weight (1000 ppm)
(1) The MCV does not apply to applications for which exemptions have been granted to the RoHS Directive.	

Products containing the substances listed in the table above, in concentrations below the MCV, are understood to be in compliance with Directive 2011/65/EU of the European Parliament and of the Council of 8 June 2011 on the restriction of the use of certain hazardous substances in electrical and electronics equipment (RoHS Directive) in accordance with the definitions set forth in the directives.

A list of Karnasch Professional Tools supplied products and the associated RoHS status is given in appendix 1.

Date of Issue: 03. February 16

Place of Issue: KARNASCH PROFESSIONAL TOOLS, Industrial Tools Division, Görsdorf

Signature:

Name: Michael Karnasch

Karnasch®



PROFESSIONAL TOOLS

Part Number	RoHS Compliant (y/n)	Compliant Since	Planned Start of Production of RoHS compatible components
KA40/KAS40	y	Start of Production	Available now
KA50/KAS50	y	Start of Production	Available now
KATV55/KATSV55	y	Start of Production	Available now
KA100/KAS100	y	Start of Production	Available now
KATV100/KATSV100	y	Start of Production	Available now
KALP45	y	Start of Production	Available now
KATV140	y	Start of Production	Available now

Karnasch®

PROFESSIONAL TOOLS

EC declaration of conformity

Name/address of the producer:	Karnasch Professional Tools™ Industrial Tools Division Straße des Friedens 10 D – 15848 Tauche / OT Görzdorf
We confirm that the product	
Product:	Magnetic hole cutting machines
Typ:	Hole cutting machine 230/110 volts: KA40; KA100; KAS40; KA50; KAS50; KATV55; KATV100; KAS100; KATSV55; KASTV100; KALP45; KATV140
complies with the following relevant conditions:	
<ul style="list-style-type: none"> ▪ EC-directive 2006/42/EG about machines ▪ EC-directive 2004/108/EG about electromagnetic compatibility 	
Following harmonized norms where used in whole or in part:	
<ul style="list-style-type: none"> • DIN EN 61000-6-4:2007 + A1:2011 • DIN EN 55014-1:2006 + A1:2009 + A2:2011 • DIN EN 55014-2:1997 + Corr. 1997 + A1:2001 + A2:2008 • DIN EN 60745-1:2009 • DIN EN 60745-2-1:2010 	
Responsible person for the documentation to EC-directive 2006/42/EG is:	
 <hr/> Cindy Burchardt, clerk	
Görzdorf, 11.01.2016	 <hr/> Michael Karnasch, CEO

Karnasch Professional Tools GmbH
Industrial Tools Division
Straße des Friedens 10 · 15848 Görzdorf
Tel. +49(0)33675 7265-0 · Fax +49(0)33675 7101
e-mail: mail@karnasch.tools
www.karnasch.tools



KARNASCH PROFESSIONAL TOOLS®

CNC TOOLS DIVISION

Siemensstraße 1
D-68542 Heddeshheim

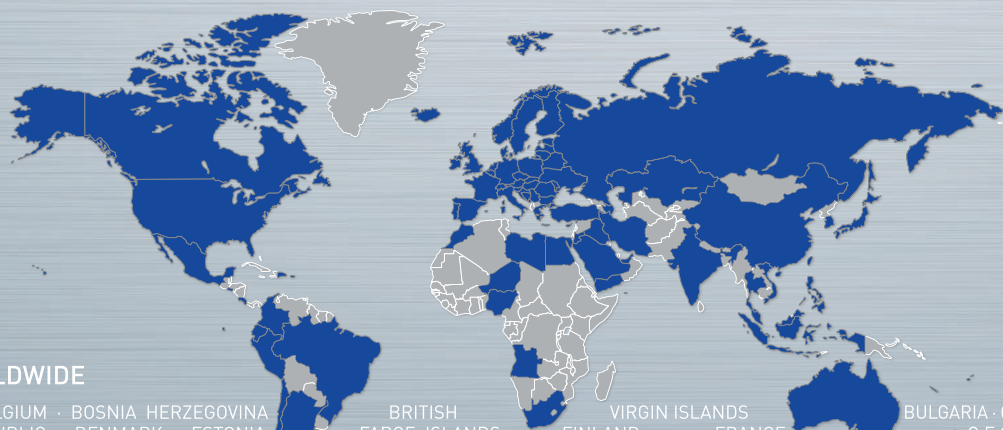
KARNASCH PROFESSIONAL TOOLS®

INDUSTRIAL TOOLS DIVISION

Straße des Friedens 10
D-15848 Tauche / OT Görzsdorf

CONTACT

Phone: +49 (0) 6203 4039-0
Fax: +49 (0) 6203 41590
E-Mail: info@karnasch.tools



KARNASCH WORLDWIDE

EUROPE AUSTRIA · BELGIUM · BOSNIA HERZEGOVINA · BRITISH FAROE ISLANDS · FINLAND · FRANCE · BULGARIA · CROATIA
CYPRUS · CZECH REPUBLIC · DENMARK · ESTONIA · ITALY · KOSOVO · LATVIA · LITHUANIA · LUXEMBOURG · MALTA · GEORGIA
GERMANY · GREECE · HUNGARY · ICELAND · IRELAND · POLAND · PORTUGAL · REPUBLIC OF MOLDOVA · REPUBLIC OF MACEDONIA · ROMANIA
MONACO · MONTENEGRO · NETHERLANDS · NORWAY · SWEDEN · SWITZERLAND · TURKEY · UKRAINE · UNITED KINGDOM · WHITE RUSSIA/BELARUS
RUSSIA · SAN MARINO · SLOVAKIA · SLOVENIA · SPAIN · MOLDOVA
AFRICA ANGOLA · EGYPT · EQUATORIAL GUINEA · LYBIA · MOROCCO · NIGERIA · REPUBLIC OF MAURITIUS · SAUDIA ARABIA · SOUTH AFRICA
UAE/UNITED ARAB EMIRATES · **ASIA** ARMENIA · AZERBAIJAN · CHINA · DEMOCRATIC PEOPLE'S REPUBLIC OF KOREA · GEORGIA · HONG KONG · INDIA
INDONESIA · IRAN · ISRAEL · JAPAN · JORDAN · KAZAKHSTAN · KUWAIT · LEBANON · MALAYSIA · PHILIPPINES · QATAR · UAE/UNITED ARAB EMIRATES
SINGAPORE · SYRIA · TAIWAN · THAILAND · TUNESJEN REPUBLIC · VIETNAM · YEMEN · **SOUTH AMERICA** ARGENTINIA · BRAZIL · CHILE · COLOMBIA
EQUADOR · PERU · REPUBLIC OF VENEZUELA · **AMERICA** AMERICAN SAMOA · CANADA · USA · **MIDDLE AMERICA** COSTA RICA · EL SALVADOR · MEXICO
AUSTRALIA · OCEANIA CALEDONIA · NEW ZEALAND